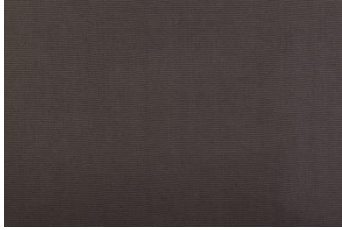


---

**Name** RIMINI

---

**Colours**



BARK



CHARCOAL



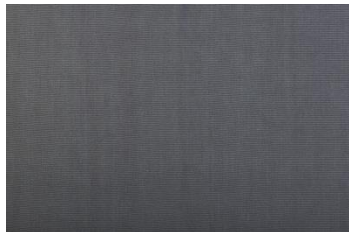
DEEP FOREST



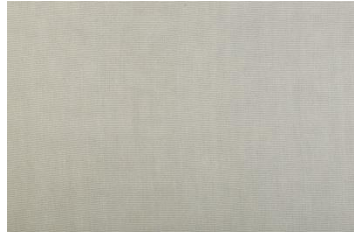
DUSK



FLAME



GUNMETAL



LINEN



MUSTARD



NATURAL



OLIVE



PUTTY



RHINO



SAGO



SEAMIST



SILVER



WEDGEWOOD



WINE






**Product Name: RIMINI**

**Phone:** +61 (03) 9510 0722 **Email:** [info@elliottclarke.com.au](mailto:info@elliottclarke.com.au)




## Name RIMINI

<b>Brand</b>	ELLIOTT CLARKE	<b>Composition</b>	100% LI
<b>Collection</b>	RIMINI	<b>Width</b>	138 CM
<b>Country of Origin</b>	ITALY	<b>Weight</b>	580 GSM
<b>Finishes</b>	-	<b>Horizontal Repeat</b>	PLAIN
<b>Abrasion</b>	15,000 MARTINDALE	<b>Vertical Repeat</b>	PLAIN
<b>Light Fastness</b>	4	<b>Additional notes</b>	-
<b>Fire Retardancy</b>	-		
<b>Care Label</b>	ECC6		

### Care Instructions

 Wash to 40°C	 Cool iron (11°C Max)
 Dry clean	 Do not chlorine bleach
 Do not tumble dry	

### Usage

 Upholstery - Domestic	 Multi-purpose
 Drapery	

### Attributes

 Non rail-roded	

**Product Name: RIMINI**

Phone: +61 (03) 9510 0722 Email: info@elliottclarke.com.au