



Heavy Commercial Upholstery

METRO



METRO Heavy Commercial Upholstery

METRO is a sophisticated KAVLON & PRET branded easy clean fabric woven to heavy commercial upholstery standards using inherently stain-resistant polyester yarns together with recycled polyester yarns retrieved from Post Consumer (PC) plastic bottles. Internationally OEKO-TEX tested to ensure against harmful chemical treatments. METRO offers 6 contemporary colours which serve as perfect companions to 'SYNERGY', 'ZENITH' & 'UNI' our new odour free faux leathers all available in over 40 popular commercial colours.

SPECIFICATIONS

Composition: 65% PC Recycled Polyester, 35% Virgin Polyester

Weight: 550 gsm

Width: 140 cm

Usage: Heavy Commercial-66,000 Martindale Cycles



High Durability



Recycled Material



Stain Resistant
PFC Free



Easy clean



Sustainability



Standard 100

APPLICATIONS



Residential



Workplace Commercial



Education



Hospitality



Food service

CARE INSTRUCTIONS For General & Spot Cleaning refer to detailed Fabric Care Label.



Do not wash



Do not chlorine bleach



Do not tumble dry



Professional Dry Clean

KAVLON

HEAVY COMMERCIAL & DOMESTIC PERFORMANCE

PRET

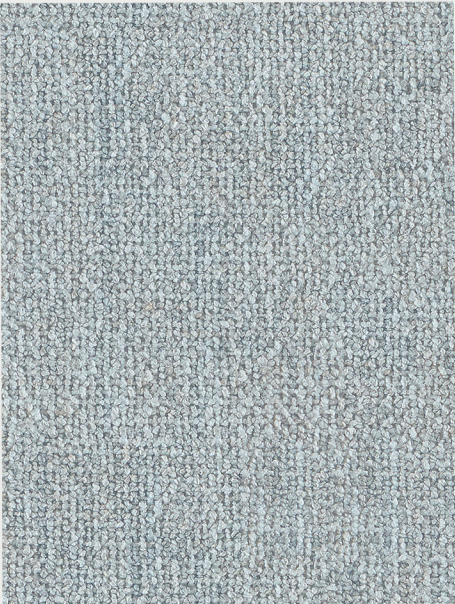
plastic bottles retrieved = textiles



Tested for harmful substances according to Oeko-Tex® Standard 100



METRO Heavy Commercial Upholstery



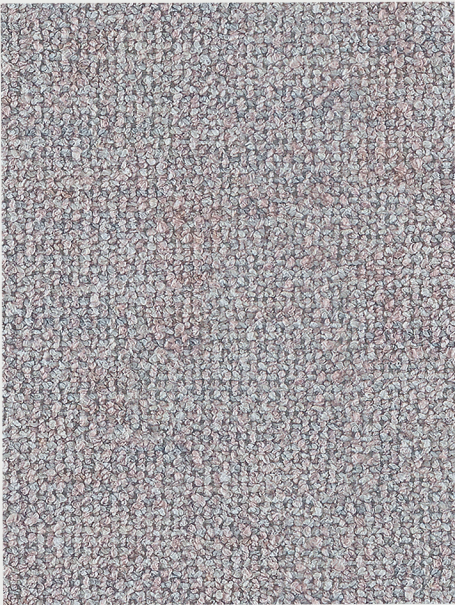
Metro Moonstone



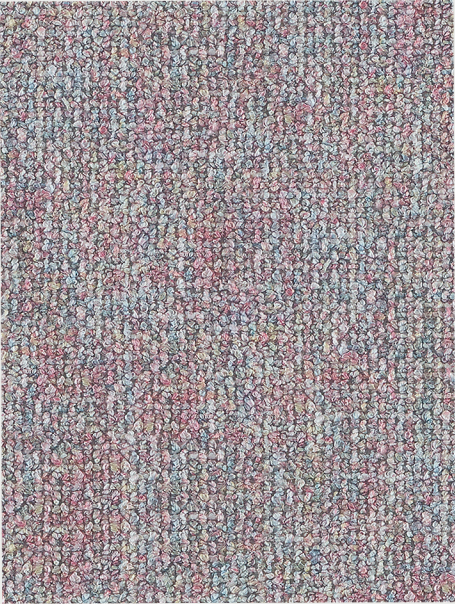
Metro Frosted Mint



Metro Saffron



Metro Shell



Metro Sorbet



Metro Farrago

RANGE NAME	METRO
PRODUCT BRAND	PRET/ KAVLON FABRICS
DESCRIPTION	High Performance, Easy Clean Furniture Fabric with minimum 40% PC Polyester yarns from recycled plastic bottles.
PERFORMANCE	HEAVY COMMERCIAL
APPLICATION	Upholstery, Commercial
COMPOSITION	65% PC Recycled Polyester 35% Virgin Polyester
WIDTH	140cm
WEIGHT	550gsm
PATTERN REPEAT	PLAIN
CARE LABEL	3
STAIN RESISTANT	KAVLON - PFC Free Inherent stain resistance
WARRANTY	3 YEARS* (in accordance with care instructions)

TEST STANDARDS	TEST RESULTS
Martindale Abrasion ISO 12947	66,000 Cycles
Seam slippage (mm) ISO 13936-2	Warp:2.4 Weft:1.7
Colour fastness to light -Xenon arc ISO105-B02, blue std 6	6
Colour fastness to rubbing ISO 105-X12:1993	4-5
Free and hydrolysed formaldehyde ISO 14184-1:1998	Not Detectable
Pilling resistance ISO 12945-2	4

